



CHC25, CHC30
Combine Header Wagon

Manual # CHC_13_03
January 2013

OPERATOR'S MANUAL

TABLE OF CONTENTS

Introduction, General Information, Serial Number.....	2
Definitions Of Safety Terms and Symbols, Accident Prevention...	3
Wagon Specifications.....	4
Operation / Maintenance.....	5
Braking Requirements.....	6
Loading Header.....	6 - 7
Top Rail & Shoe Positions.....	8
Parts Illustrations.....	9 - 13
Complete Wagon.....	9
Front Axle.....	10
Rear Axle.....	11
Tongue.....	11
Shoe.....	12
Tie Down Ratchet & Strap.....	13
Warranty Policy.....	14

HORST WELDING
8082 Rd 129
Listowel, ON N4W 3G8
Canada
519-291-4162
1-866-567-4162
Fax 1-519-291-5388
sales@horstwelding.com
www.horstwelding.com

INTRODUCTION

Thank you for purchasing your new **Horst Welding CHC 2 Wheel Steer Header Wagon**. Your Header Wagon has been designed and manufactured to give you many years of dependable service. You or any other person, who will be assembling, operating, maintaining or working with this product, are required to read and completely understand the information and instructions contained in this manual. If anyone does not fully understand every part of this manual, please obtain further assistance by contacting the dealer from which this product was purchased or by contacting Horst Welding at the telephone number or address listed on the previous page of this manual. Keep this manual available for reference whenever this product is being handled or used. Provide this manual to any new owners and/or operators.

This manual covers models: **CHC25, CHC30**.

GENERAL INFORMATION


The purpose of this manual is to assist you in safely operating and maintaining your Header Wagon in a safe manner. Read this manual carefully to obtain valuable information and instructions that will help you achieve safe and dependable service. The illustrations and data used in this manual were current at the time of printing, but due to possible engineering and/or production changes, this product may vary slightly in detail. Horst Welding reserves the right to redesign and/or change components as necessary without notification.

SERIAL NUMBER LOCATION

The serial number for your Header Wagon is located on the back top right side of the rear axle.

DEFINITION OF SAFETY TERMS AND SYMBOLS

Throughout this manual, the terms **DANGER, WARNING and CAUTION** are used to indicate the degree of hazard to personnel if proper safety procedures are not followed. These words will be used in conjunction with the Safety Alert Symbol: a dark triangle containing a white exclamation mark.

	The Safety Alert Symbol means: - ATTENTION! - BECOME ALERT! - YOUR SAFETY IS INVOLVED!
WARNING	Indicates a potentially hazardous situation, which, if not avoided, Could result in death or serious injury.
IMPORTANT	Precautions that must be followed to prevent damage to equipment.

The safety information given in this manual does not replace any safety codes, insurance needs, federal, state and local laws.

ACCIDENTS CAN BE PREVENTED WITH YOUR HELP!

The best safety device is a careful operator. Horst Welding and your dealer ask that YOU be that careful, responsible equipment operator.

Pay attention to the job at hand. Do not let your mind lose concentration on what you are doing. No accident prevention program can be successful without the wholehearted cooperation of the person who is directly responsible for the operation of the equipment.

If accidents are to be prevented (*and accidents can be prevented*), that prevention will come from equipment operators who accept their complete responsibility and anticipate the results of their actions.

The designer, the manufacturer, and the safety engineer all help create a safe product, but their combined efforts can be wiped out with a single careless act by the operator of that product.

Do not attempt to operate this equipment under the influence of drugs or alcohol.

YOU ARE THE KEY TO SAFETY BECAUSE:

YOU are responsible for the SAFE operation and maintenance of YOUR Header Wagon.

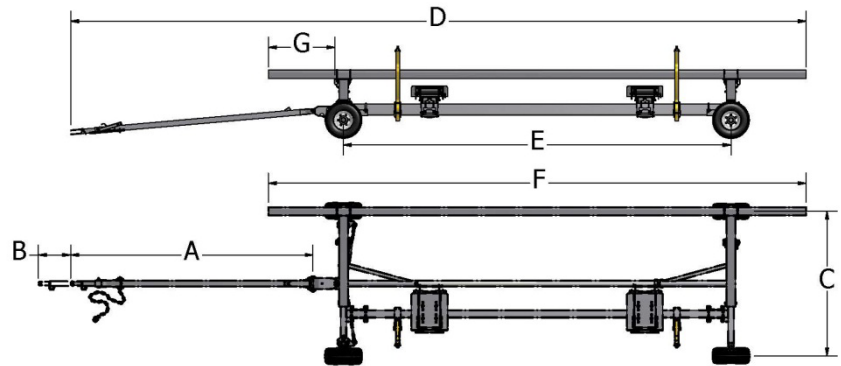
YOU are responsible to familiarize yourself, and anyone else who will operate, maintain, or work around this product, with the safety information contained in this manual.

YOU are responsible to read ALL information contained in this manual to any operators or maintenance personnel who are not fully able to read the written English language. Whether YOU read the manual as written or translate it into another language, YOU must make certain that all operators and maintenance personnel have complete understanding of the full and exact contents of this manual.

YOU can reduce the risk of injury or death by following all safety precautions and by using good safety practices.

HEADER WAGON SPECIFICATIONS

	CHC25	CHC30
A	11' 3"	11' 3"
B	18"	18"
C	80"	80"
D	34' 3"	36' 9"
E	18'	18'
F	25'	30'
G	37½"	67½"



MODEL	CHC25	CHC30
Rated Capacity	10,000 lb	10,000 lb
Tires: 20.5x8-10 12 ply on 10x6x6 Wheel	Standard	Standard
Tires: 26x12 12 ply Tubeless Tire on 12x10.5x6 Wheel	<i>Optional</i>	<i>Optional</i>
Tires: 11Lx15 12 ply Hwy Service TL Tire on 15x8x6 HD Wheel	<i>Optional</i>	<i>Optional</i>
Hubs	6 Bolt Pattern	6 Bolt Pattern
Spring Balanced Tongue	<i>Optional</i>	<i>Optional</i>
Top Rail	4" X 4" HSS Steel Tubing	
Max. Head Size	25'	30'
Axle	3" x 6" HSS Steel Tubing	
Safety Chain	Standard	Standard
Adjustable Shoes	Standard	Standard
Tie Down Straps	Standard	Standard
Road Signal Kit	<i>Optional</i>	<i>Optional</i>
Shipping Weight	1540 lb.	1590 lb.

INITIAL OPERATION / MAINTENANCE



WARNING

BE CERTAIN ALL POWER IS SHUT OFF BEFORE ADJUSTING, SERVICING, CLEANING OR LUBRICATING THE HEADER WAGON.

BEFORE FIRST USE:

- Inspect Wagon for shipping damage. If damage does exist, do not use until damaged parts have been replaced or repaired.
- Ensure slow-moving-vehicle emblem has been properly installed at rear of Wagon.
- Ensure all persons operating Wagon have read and understood the operator's manual.
- Properly fasten all braces, bolts, nuts, lug bolts and lug nuts.
- Inflate all tires to recommended PSI:
 - 20.5x8-10 12 ply105 PSI MAX (90 PSI recommended for optimum performance)
 - 11Lx15 12 ply90 PSI MAX (65 PSI recommended for optimum performance)
 - 26x12 12 ply62 PSI MAX (recommended).
- Use a high strength hitch pin and chain to fasten Wagon to towing unit.



WARNING – if equipped with lights

BE CERTAIN ALL LIGHTS ARE WORKING PROPERLY **BEFORE** ENTERING HIGHWAY TRAFFIC.

SAFETY CHAIN USER INSTRUCTIONS:

1. Secure safety chain by wrapping it around tongue and feeding it through chain loop located on the outer side of tongue and connect to the towing unit's attaching bar.
2. Do not allow more slack than necessary for articulation (*max. 9 inches*).
3. Do not use any intermediate support as attaching point.
4. Store safety chain by securing it around the tongue.
5. Replace safety chain if one or more links or end fittings are broken, stretched or otherwise damaged or deformed.

OPERATING INSTRUCTIONS / MAINTANANCE



WARNING

NEVER POSITION YOURSELF UNDER OR NEAR THE HEADER WHEN MOUNTING HEADER ON WAGON.

- Adjust brackets on Header Wagon to best fit your make and model header. (*refer to pg. 6 - 8*)
- Securely fasten header to Wagon. (*refer to pg. 10*)
- After mounting the header on Wagon, turn front wheels to make sure header is positioned clear of tire movement.
- Absolutely no persons may ride on this equipment.
- Do not exceed load and size limits of the Wagon. Maintain speeds of 20 mph or less.
- Keep tires properly inflated. (*Both over inflation and under inflation can greatly reduce tire life.*)
- Inspect bracing and welds periodically and repair immediately if needed. Failure to repair could cause extensive damage and greatly reduce life of Wagon.
- Inspect tie rods and replace bearings in steering assembly when needed.
- Repack bearings in the hub assembly once a year or as needed. Use a good quality bearing lubricant such as Lithium EP2 or equivalent.
- Check wheel bolts often and keep them properly tightened.

BRAKING SYSTEM REQUIREMENTS:



WARNING
TOW LOADS SAFELY.

Stopping distance increases with speed and weight of towed loads and on slopes. Towed loads with or without brakes that are too heavy for the tractor or are towed too fast can cause loss of control. Consider total weight of equipment and its load.

Observe these recommended maximum roads speed, or local speed limits which may be lower:

- If towed equipment does not have brakes, **do not travel more than 32 km/h (20 mph)** and do not tow loads more than 1.5 times the tractor weight.
- If towed equipment has brakes, **do not travel more than 40 km/h (25 mph)** and do not tow loads more than 4.5 times the tractor weight.

Ensure load does not exceed recommended weight ratio. Use additional caution when towing loads under adverse surface conditions, when turning and on inclines.

LOADING THE HEADER:



► When lowering header on to wagon, front of header should be first to make contact. Adjust top rail accordingly. **Top rail must be positioned squarely under nylon pad at front of header.**



► If possible, Grain Header should rest on main beam along bottom rear of header. If header is not equipped with beam (*as in picture*) rest on vertical posts/brackets on rear of header.

(header carrier may not be exactly like above photos)

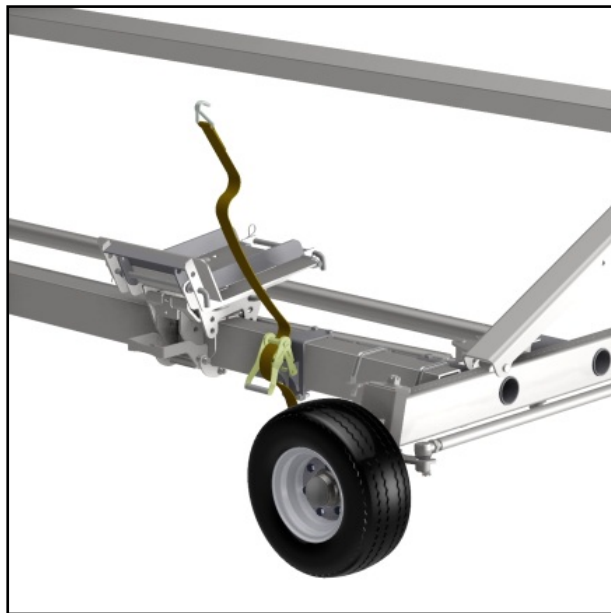
LOADING THE HEADER: (CONT.)



► For Corn Header, shoe must be placed directly under rear skid plate on bottom of header.

(header carrier may not be exactly like above photo)

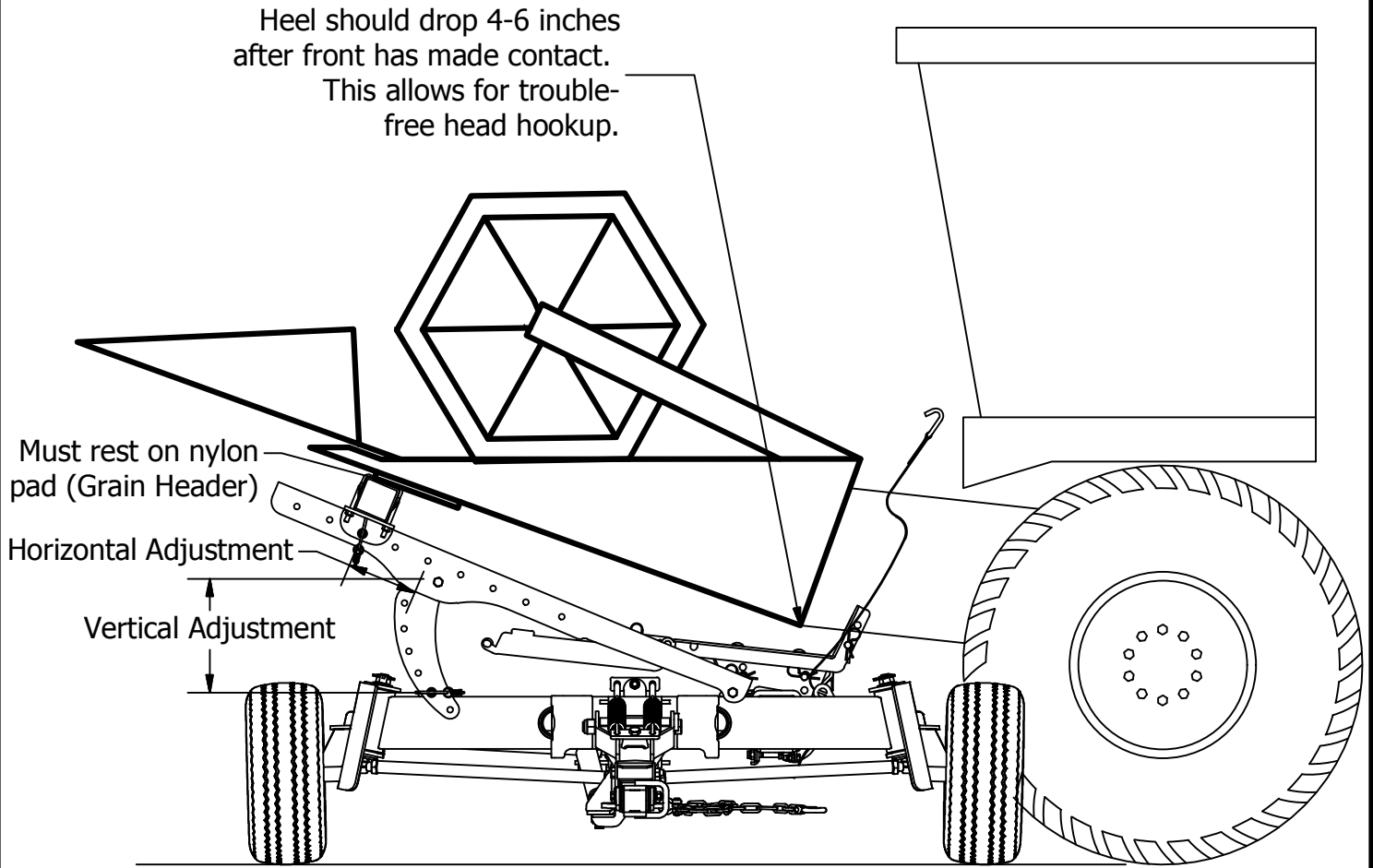
SECURING THE HEADER:



► Locate a place on the header to hook the tie down strap to. Make sure it is rigid enough so it won't bend or break the header when the strap is tightened. Position the movable bracket directly below this point. Hook the strap to the header and ratchet the strap tight. If you are going any distance, periodically check the strap for tightness.

Proper Top Rail Position;

Vertical - Front of header must make contact before heel.
Horizontal - Nylon pads (behind cutter bar) must land squarely on top of rail. (Grain Header)



Front View of Header Wagon

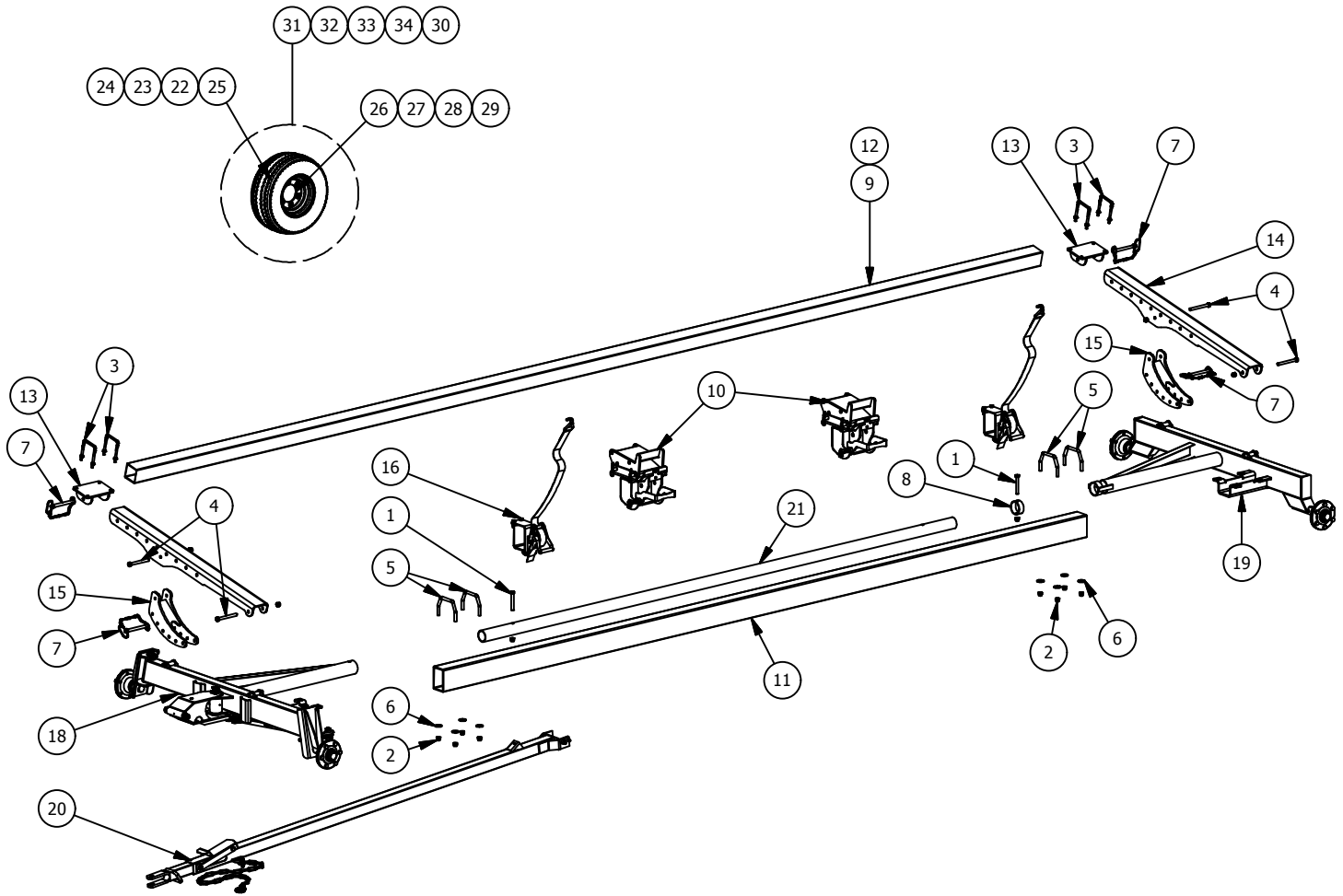
Proper Shoe (heel rest) Position;

(Brands & models will differ)

- If header is fitted with a beam along bottom rear, typically shoes should be positioned close to front and back of wagon.
- If header is NOT fitted with beam along bottom rear, position shoes so vertical posts on back of header will rest on them.

Model **CHC**
CHC25 & CHC30

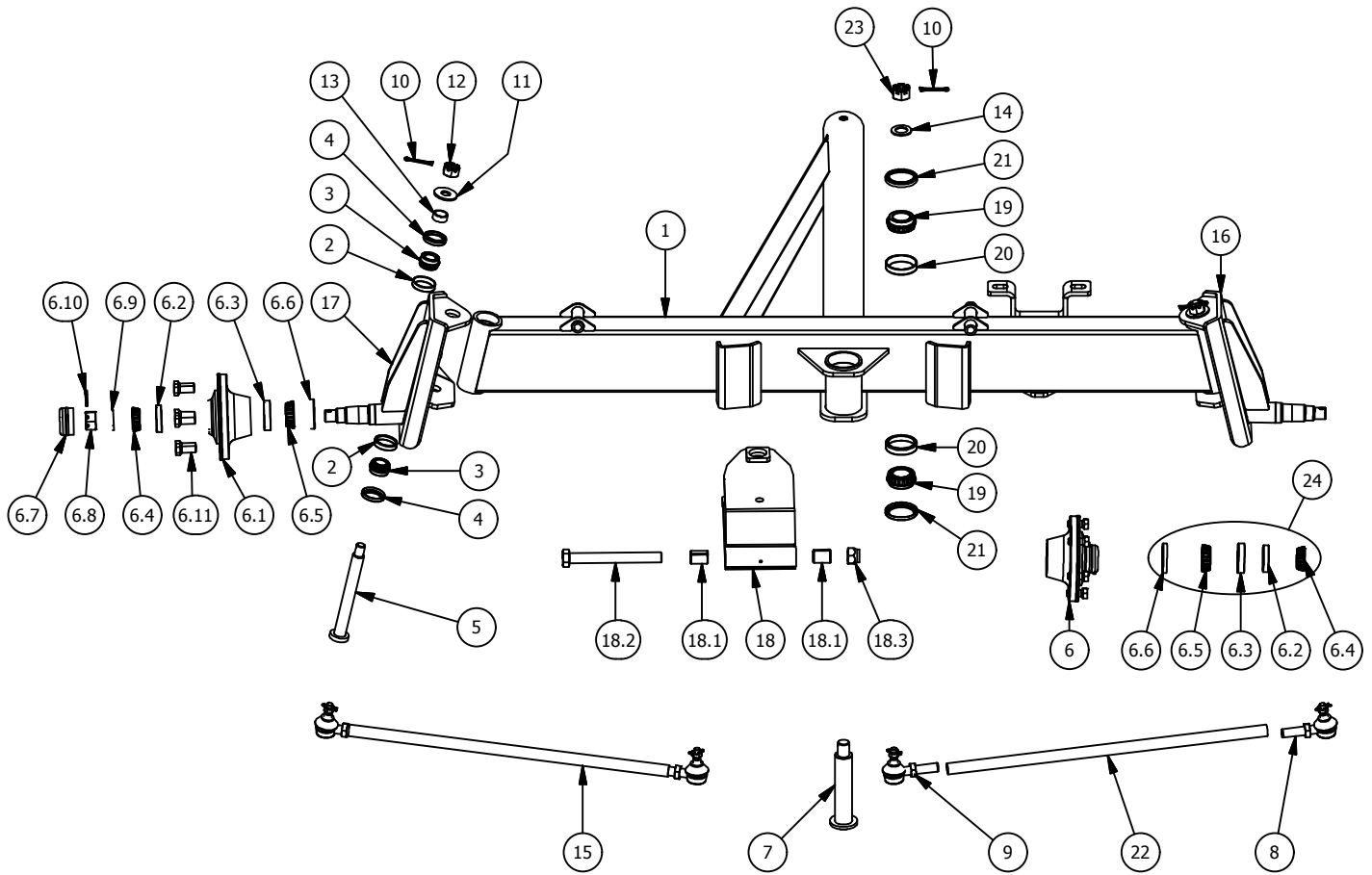
Model Year **2012 - current**



Parts List				Parts List			
ITEM	QTY	PART NUMBER	DESCRIPTION	ITEM	QTY	PART NUMBER	DESCRIPTION
1	2	11-1025	5/8 x 4 1/2 Hex Bolt & Locknut	20	1	WA-TCHC	CHC Tongue Assembly
2	14	11-1026	5/8 Lock Nut	21	1	WA-RR13	13' Round Reach
3	4	11-1224	U Bolt (1/2 x 4 x 5 1/2) & Locknuts	22	4	TI-2058	20.5 x 8-10 (F Range) Tire Only
4	4	11-1238	5/8 x 6 Bolt & Locknut	23	4	TI-2257015	225/75/R15 (D Range) Highway Trailer Tire Only
5	4	11-1439	5/8 Bottom Rail U-Bolt	24	4	TI-2358516	235/85/R16 (F Range) Highway Trailer Tire Only
6	8	11-1440	5/8 Flat Washer	25	4	TI-111512HS	11L x 15 (F Range) Highway Service Tire Only
7	4	11-1453	Draw Pin (5/8) c/w Chain & Lynch Pin	26	4	WH-1066	10 x 6 x 6 Rim
8	1	22-1024	Retainer Ring	27	4	WH-1566	15 x 6 x 6 Rim
9	1	22-1225	Top Rail 30' (4" x 4" x .188 HSS)	28	4	WH-1686	16 x 8 x 6 Rim
10	2	22-1454	Complete Shoe Assembly	29	4	WH-1586HD	15 x 8 x 6 HD Rim
11	1	22-1456	Bottom Rail	30	4	TI-CHC	20.5 x 8-10 (F Range) Tire on 10X6X6 Rim
12	1	22-1544	Top Rail 25' (4" x 4" x .188 HSS)	31	4	TI-261212121056	26 x 12 12 Ply Tire on 12 x 10.5 x 6 Rim
13	2	22-1572	Top Rail Mount Assembly	32	4	TI-22570151566	225/75/R15 (D Range) Highway Trailer Tire on 15 x 6 x 6 Rim
14	2	22-1573	Top Rail Support Channel	33	4	TI-23585161686	235/85/R16 (F Range) Highway Trailer Tire on 16 x 8 x 6 Rim
15	2	22-1574	Top Rail Adjuster Assembly	34	4	TI-111512HS1586HD	11L x 15 (F Range) Highway Service Tire on 15 x 8 x 6 HD Rim
16	2	33-1759	Moveable Ratchet Complete Assembly				
18	1	WA-FCHC	CHC Complete Front Axle				
19	1	WA-RCHC	CHC Complete Rear Axle				

Model **CHC**
WA-FCHC Front Axle

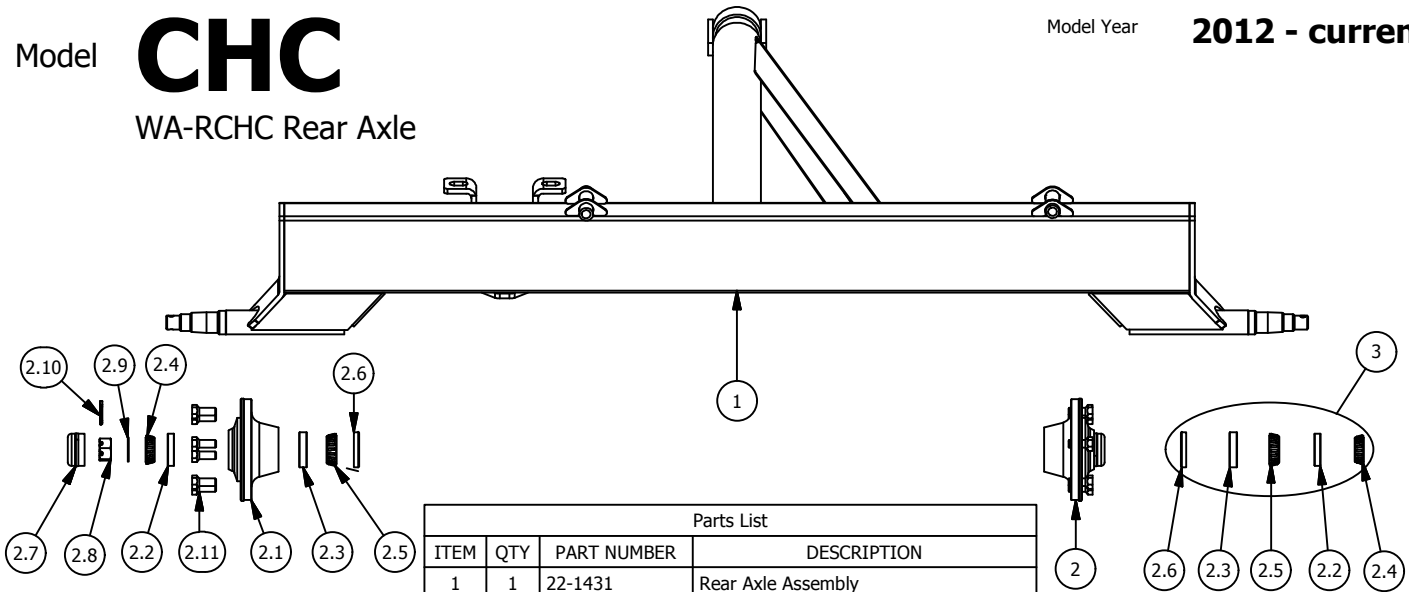
Model Year **2012 - current**



ITEM	QTY	PART NUMBER	DESCRIPTION	ITEM	QTY	PART NUMBER	DESCRIPTION
1	1	22-1832	Front Axle Assembly	9	2	11-1007	Rod End L Thread
2	4	11-1418	[Cup(L44610)]	10	3	11-1016	3/16 x 2 Cotter Pin
3	4	11-1417	Cone(L44643A)	11	2	11-1014	3/4 Washer A
4	4	11-1419	[Seal(CR3596)]	12	2	11-1015	3/4 Heavy Hex Slotted Nut
5	2	22-1423	Spindle Pin	13	2	22-1528	Spacer Bushing (1"ID x 1 1/4"OD x .5")
6	2	33-1042	Hub c/w Parts (4000 lb)	14	1	11-1050	1" Washer (1-0)
6.1	2	11-1041	Hub (4000 lb)	15	2	33-1833	Tie Rod c/w Parts
6.2	2	11-1046	[Cup(LM67010)]	16	1	22-1834	Left Spindle Assembly
6.3	2	11-1045	[Cup(LM29710)]	17	1	22-1835	Right Spindle Assembly
6.4	2	11-1047	[Cone(LM67048)]	18	1	22-1836	Tongue Bracket Complete Assembly
6.5	2	11-1044	[Cone(LM29748)]	18.1	2	11-1012	[Bushing (1.125 x 0.875 x 1.5)]
6.6	2	11-1043	[Seal(CR17415)]	18.2	2	11-1030	7/8 x 8 Bolt
6.7	2	11-1048	Dust Cap (D-4000)	18.3	1	11-1029	7/8 Locknut
6.8	2	11-1051	1" Slotted Hex Nut (1-14)	19	2	11-1010	Cone (13686)
6.9	2	11-1050	1" Washer (1-0)	20	2	11-1009	Cup (13620)
6.10	2	11-1016	3/16 x 2 Cotter Pin	21	2	11-1011	Seal (CR20952)
6.11	12	11-1049	Wheel Bolt (9/16 x 1-3/4)	22	2	22-1837	Tie Rod (28")
7	1	22-1013	Timkin Bolt	23	1	11-1081	1" Heavy Hex Slotted Nut
8	2	11-1006	Rod End R Thread	24	1	33-1557	Bearing & Seal Kit for 4000 lb Hub

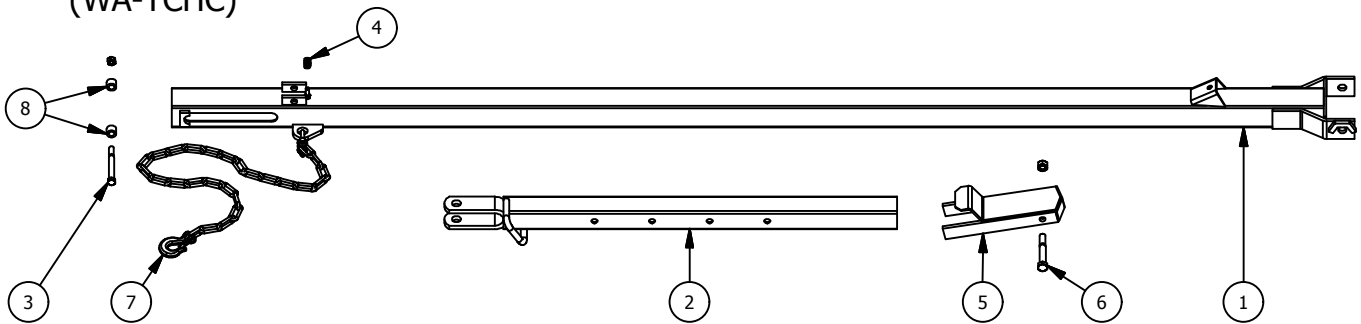
Model **CHC**
WA-RCHC Rear Axle

Model Year **2012 - current**



Parts List			
ITEM	QTY	PART NUMBER	DESCRIPTION
1	1	22-1431	Rear Axle Assembly
2	2	33-1042	Hub c/w Parts (4000 lb)
2.1	1	11-1041	Hub (4000 lb)
2.2	1	11-1046	[Cup(LM67010)]
2.3	1	11-1045	[Cup(LM29710)]
2.4	1	11-1047	[Cone(LM67048)]
2.5	1	11-1044	[Cone(LM29748)]
2.6	1	11-1043	[Seal(CR17415)]
2.7	1	11-1048	Dust Cap (D-4000)
2.8	1	11-1051	1" Slotted Hex Nut (1-14)
2.9	1	11-1050	1" Washer (1-0)
2.10	1	11-1016	3/16 x 2 Cotter Pin
2.11	6	11-1049	Wheel Bolt (9/16 x 1-3/4)
3	1	33-1557	Bearing & Seal Kit for 4000 lb Hub

CHC Tongue Assembly
(WA-TCHC)

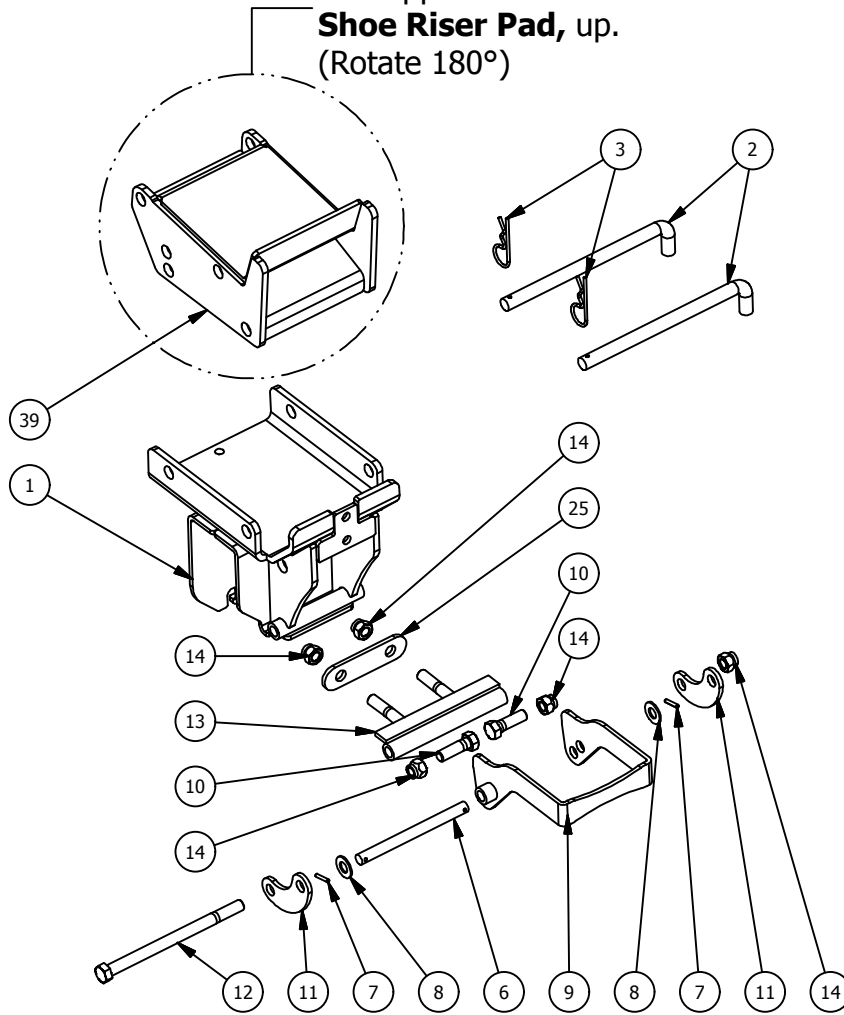


Parts List			
ITEM	QTY	PART NUMBER	DESCRIPTION
1	1	22-1202	Main Tongue Assembly
2	1	22-1033	CHC Tongue Extension
3	1	11-1038	5/8 x 5 Bolt & Locknut
4	1	WA2175	Tongue Lock Spring
5	1	22-1036	Latch Assembly
6	1	11-1034	5/8 x 4-1/2 Bolt & Locknut
7	1	11-1203	CHC Safety Chain Complete Assembly
8	2	22-1035	145 Slide Bushing
9	1	11-1650	3/8" x 2" Hex Bolt
10	1	11-1220	3/8" Locknut

Model **CHC**
Adjustable Shoe Assembly

Model Year **2012 - current**

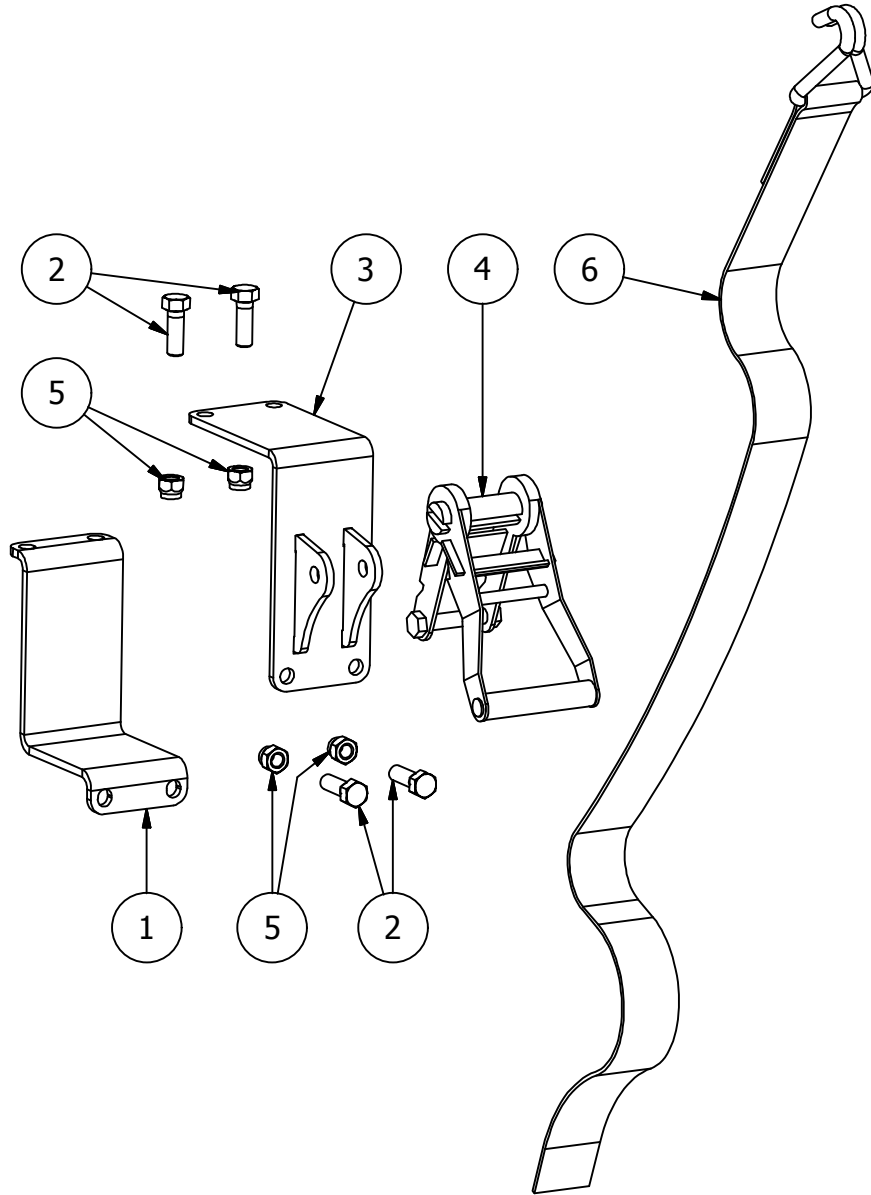
For use with "**Corn Head**",
turn opposite side of
Shoe Riser Pad, up.
(Rotate 180°)



Parts List			
ITEM	QTY	PART NUMBER	DESCRIPTION
1	1	22-1880	CHCUS Lower Shoe Assembly
2	2	22-1464	Shoe Heal Pin
3	2	11-1445	Hitch Pin (480-009)
6	1	22-1458	Handle Pivot Pin
7	2	11-1461	Roll Pin (3/16 x 1 1/8)
8	2	11-1440	5/8" Flat Washer
9	1	22-1457	Shoe Cam Lock Handle Assembly
10	2	11-1462	Bolt (5/8 x 2)
11	2	22-1459	Clamp Linkage Plate
12	1	22-1460	Bolt (5/8 x 9 1/2)
13	1	22-1595	Clamp Adjustment Weldment
14	5	11-1026	5/8" Lock Nut
25	1	22-1883	Tightener bolt Washer
39	1	22-1483	Shoe Tube Cradle Assembly

Model

CHC Moveable Ratchet



Parts List			
ITEM	QTY	PART NUMBER	DESCRIPTION
1	1	22-1823	Ratchet Inner Bracket
2	4	11-1802	1/2" x 1 1/2" Hex Bolt
3	1	22-1818	Moveable Ratchet Mount Assembly
4	1	11-1740	CHC Strap Ratchet Kinedyne P/N 804
5	4	LA-SB1022	1/2" Lock Nut
6	1	11-1591	2" x 52" nylon strap

HORST WAGONS

Horst Welding Warranty Policy

All equipment is sold subject to mutual agreement that it is warranted by the company to be free from defects of material and workmanship. But the company shall not be liable for special, indirect, or consequential damages of any kind under this contract or otherwise. The company's liability shall be limited exclusively to replacing or repairing without charge, at its factory or elsewhere, at its discretion, any material or workmanship defects that become apparent within one year from the date on which the equipment was purchased. The company shall have no liability for related damages of any kind. The buyer by the acceptance of the equipment will assume all liability for any damages that may result from the use or misuse by his employees or others.

Distributor/dealer must notify Horst Welding of the defect by phone, fax or email. Recommended repairs and cost are to be discussed with, and agreed on, by an authorized Horst Welding representative. Repair and labor (*at an agreed rate*) will be performed by a dealer for Horst Welding or a repair shop designated by Horst Welding.

All claims **must** be discussed with a representative of Horst Welding prior to any repairs or warranty will be **void**.

All claims must be accompanied by a photograph of the defective product.

All defective products must be returned to Horst Welding in Listowel, Ontario unless directed otherwise by a representative of Horst Welding.

Horst Welding Warranty will not apply to:

- Product that in the judgment of Horst Welding has been misused by the user.
- Product not sold or manufactured by Horst Welding.
- Alterations or repairs not authorized by a representative of Horst Welding.